



300X

600MM

Glossy Series



TT 1121 L



TT 1121 HL1



TT 1121 D



TT 1121 F





TT 1121 L



TT 1121 HL2



TT 1121 D



TT 1121 F



TT 1122 L

TT 1122 HL1

TT 1122 D

TT 1122 F





TT 1123 L



TT 1123 HL1



TT 1123 D



TT 1123 F





TT 1124 L



TT 1124 HL1



TT 1124 D



TT 1124 F

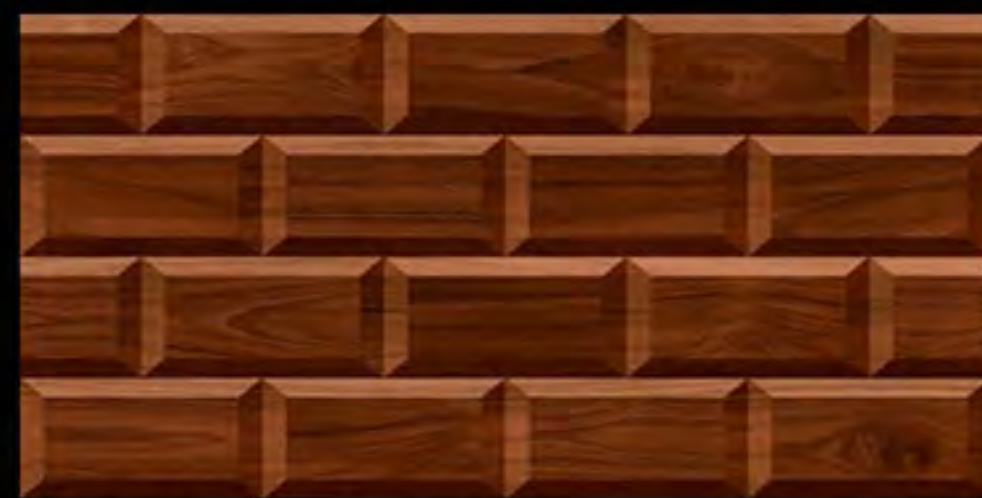




TT 1125 L



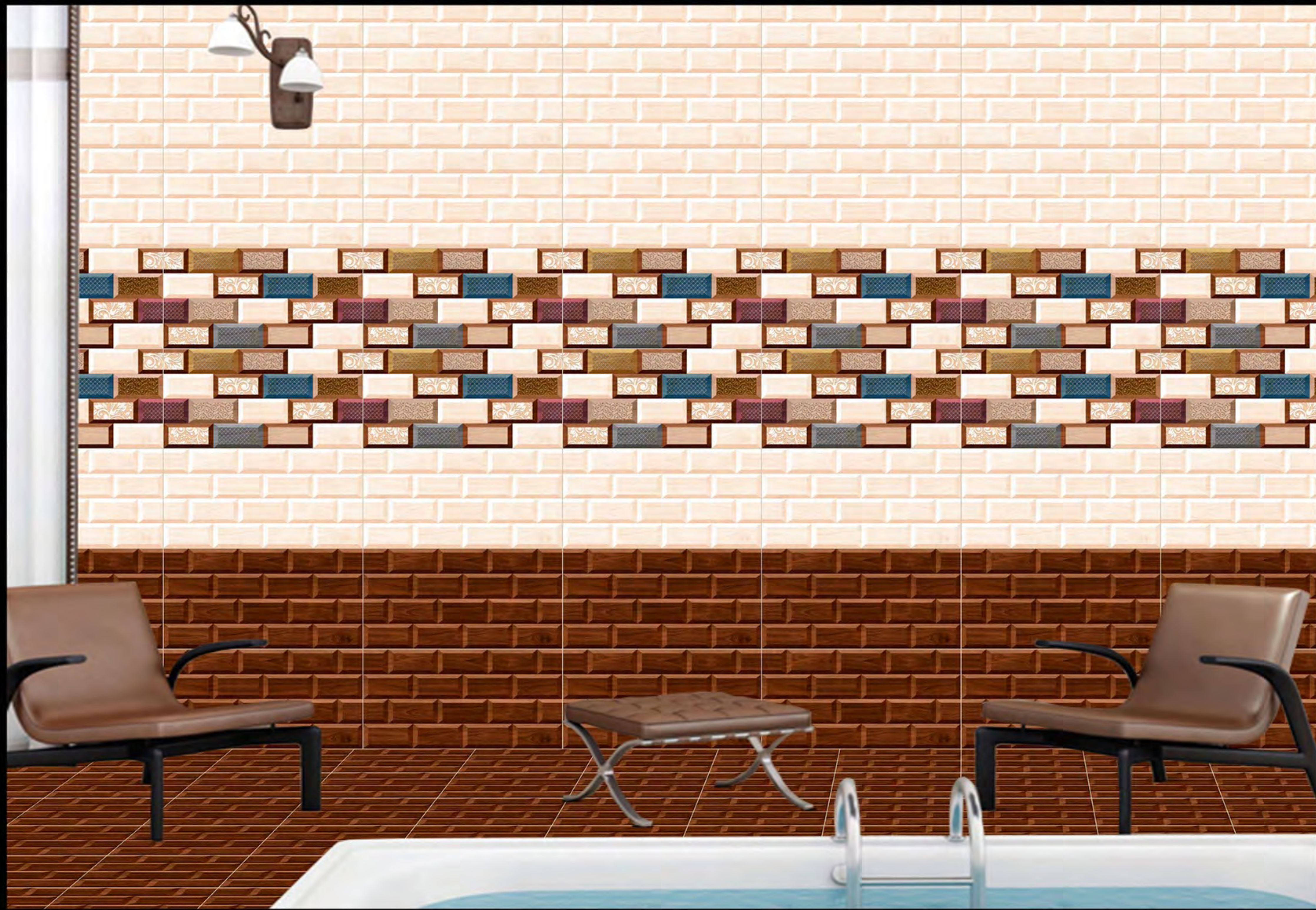
TT 1125 HL1



TT 1125 D



TT 1125 F





TT 1126 L



TT 1126 HL1



TT 1126 D



TT 1126 F





TT 1127 L



TT 1127 HL1



TT 1127 D



TT 1127 F

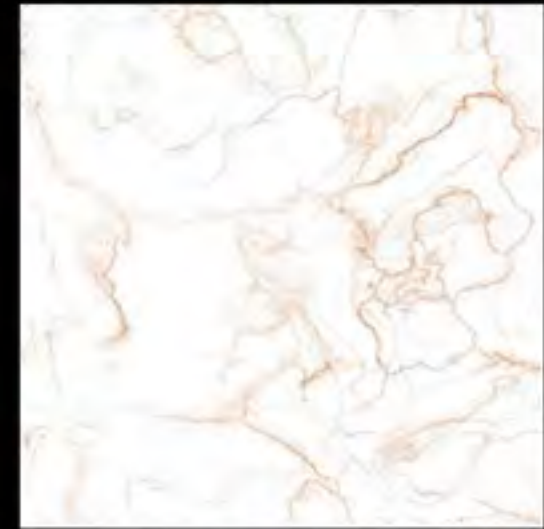




TT 1128 L



TT 1128 HL1



TT 1128 F





TT 1129 L



TT 1129 HL1



TT 1129 D



TT 1129 F





TT 1129 L



TT 1129 HL2



TT 1129 D



TT 1129 F





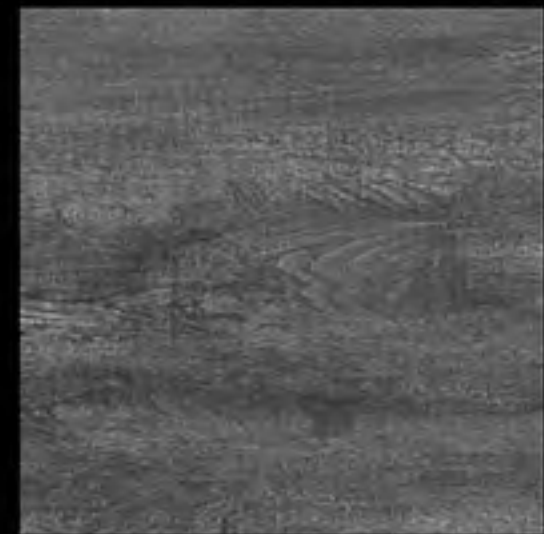
TT 1130 L



TT 1130 HL1



TT 1130 D



TT 1130 F





TT 1131 L



TT 1131 HL1



TT 1131 D



TT 1131 F





TT 1132 L



TT 1132 HL1



TT 1132 D



TT 1132 F





TT 1133 L



TT 1133 HL1



TT 1133 D



TT 1133 F





TT 1134 L



TT 1134 HL1

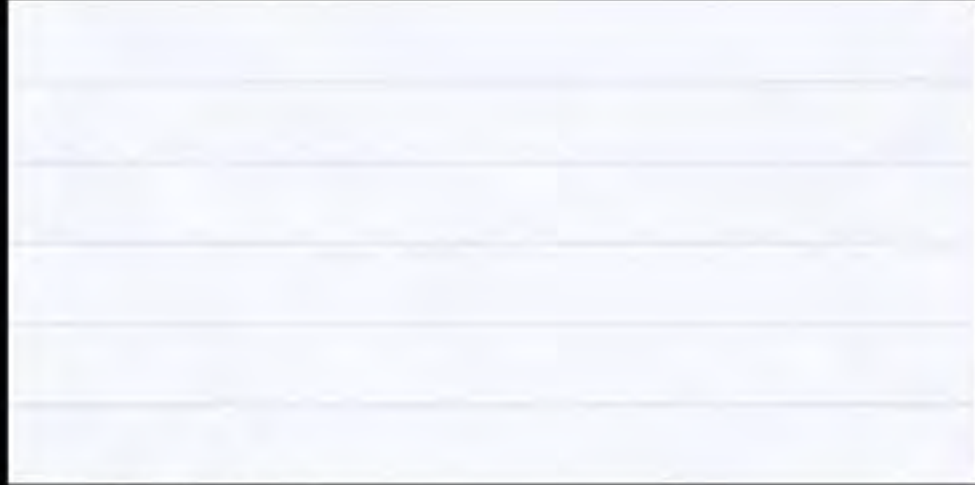


TT 1134 D




TT 1134 F







TT 1135 L



TT 1135 HL1



TT 1135 D



TT 1135 F



Home

sm (lat lare) li li, residência, casa, moradia. 2. ...
3. pátria, origem, cidade ou terra natal. 4. ...
casa. 2. retorno. 3. ter lar, residir, morar. 4. prover o
lar ou residência: adf | casaria, doméstico, familiar
nativa, nacional. 3. expressiva que alinge ou alcançar
objetiva adv 1 para casa, rumo à pátria, de retorno
casa.



TT 1136 L



TT 1136 HL1



TT 1136 D



TT 1136 F





TT 1137 L



TT 1137 HL1



TT 1137 F





TT 1138 L



TT 1138 HL1



TT 1138 HL2



TT 1138 F





TT 1139 L



TT 1139 HL1

PLAIN



TT 1139 D



TT 1139 F





TT 1140 L



TT 1140 HL1



TT 1140 D



TT 1140 F

